

WhozzCalling Listener Service



Version 1.1 build 1316

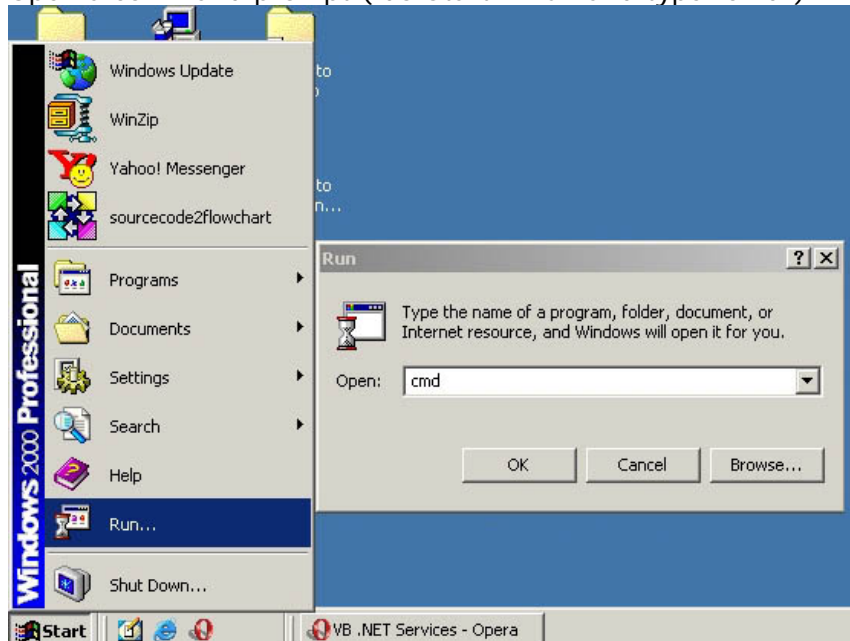
Installation Notes

This version of the WhozzCalling Listener Service is designed to be run in the Windows NT, 2000, and XP environments as a Windows Service. This version requires that the Microsoft .NET Framework be installed on the computer that the service will be run on.

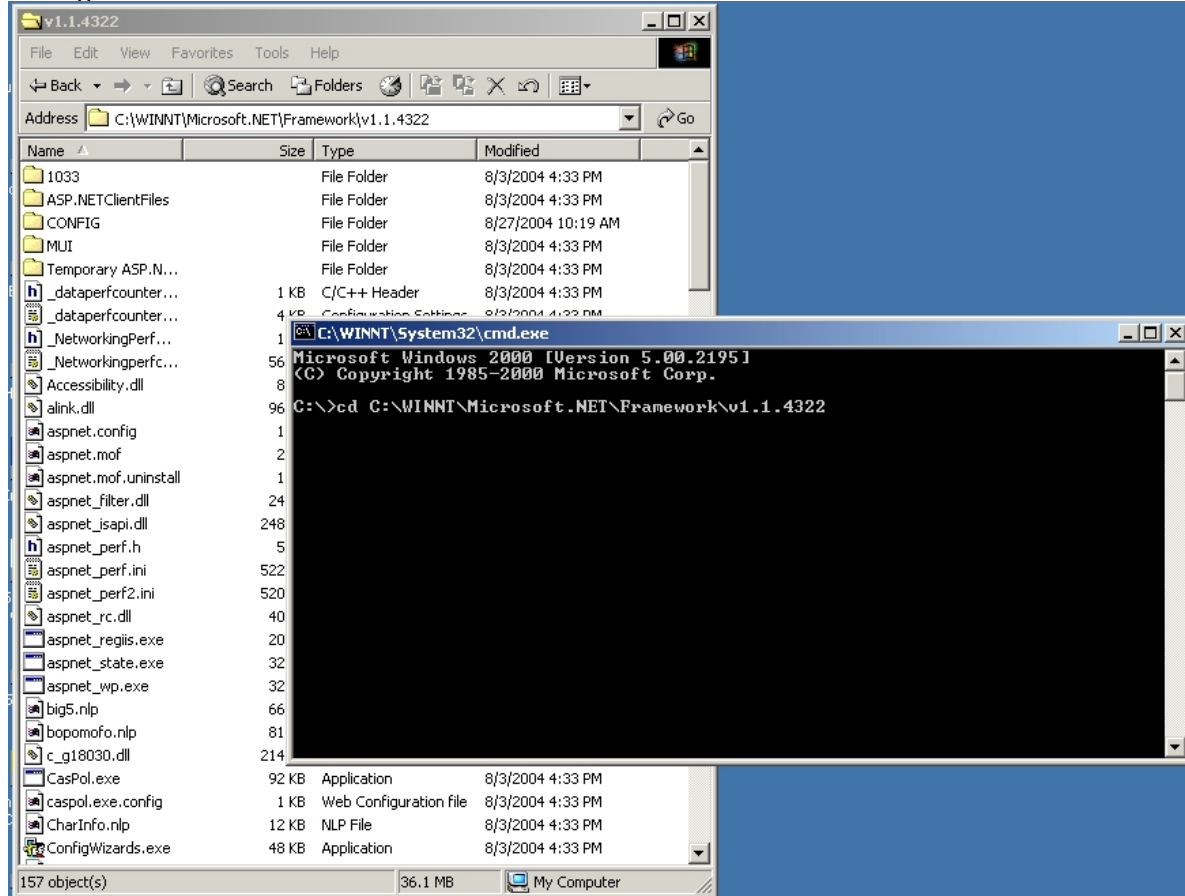
To install, unzip the WCListener_D.exe file into the location on your computer that you wish to run the service from.

Next, locate the InstallUtil.exe application included in the .NET Framework installation of your computer (ex: "C:\\WINNT\\Microsoft.NET\\Framework\\v1.1.4322\\InstallUtil.exe").

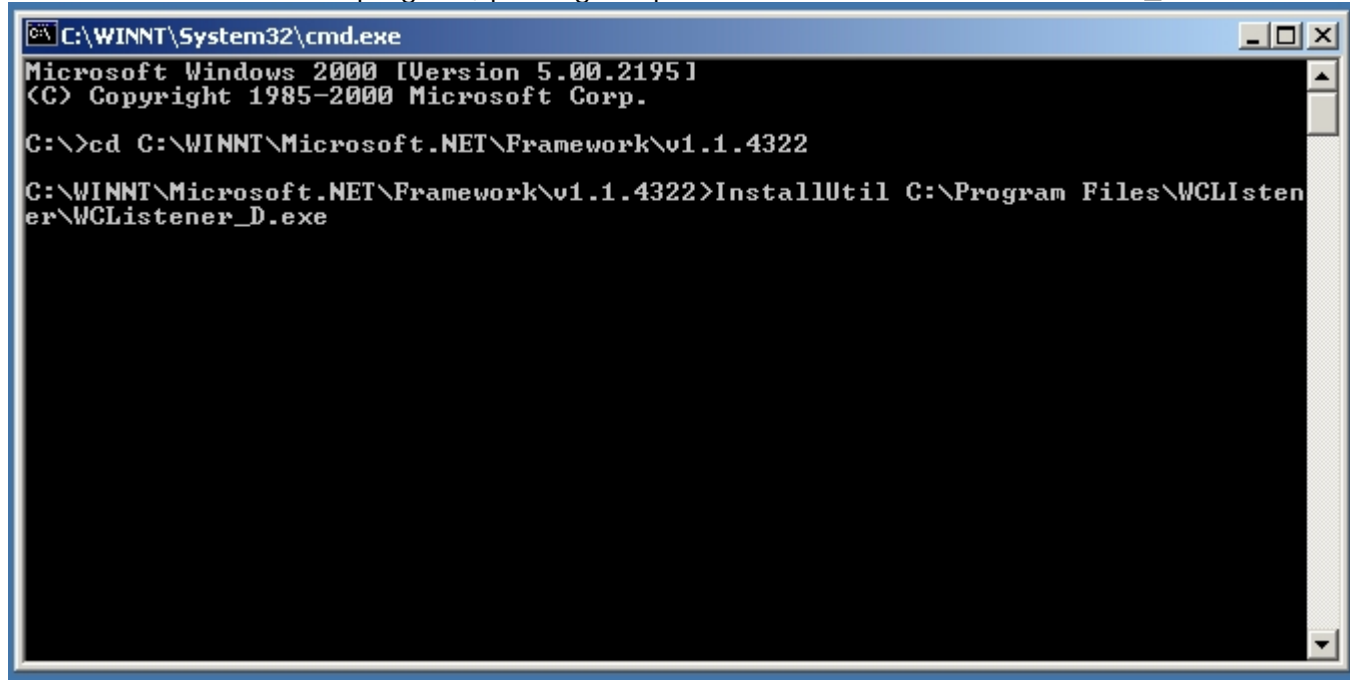
Open a command prompt (do Start->Run and type "cmd").



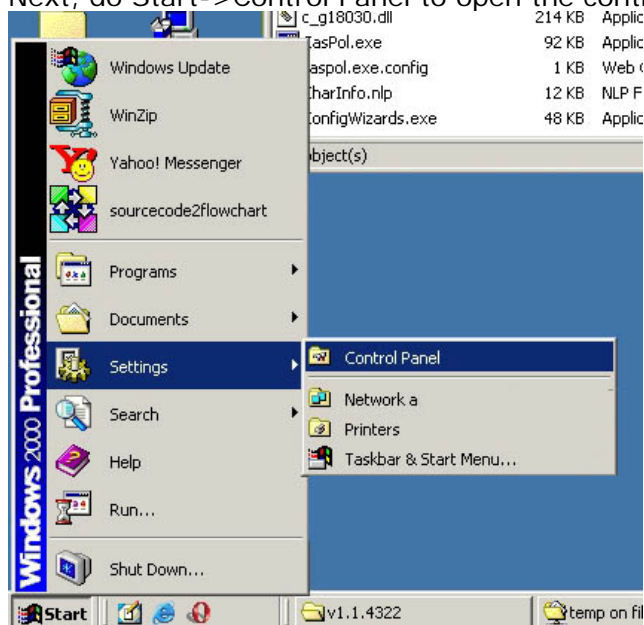
Change directories to the location of the InstallUtil.exe.



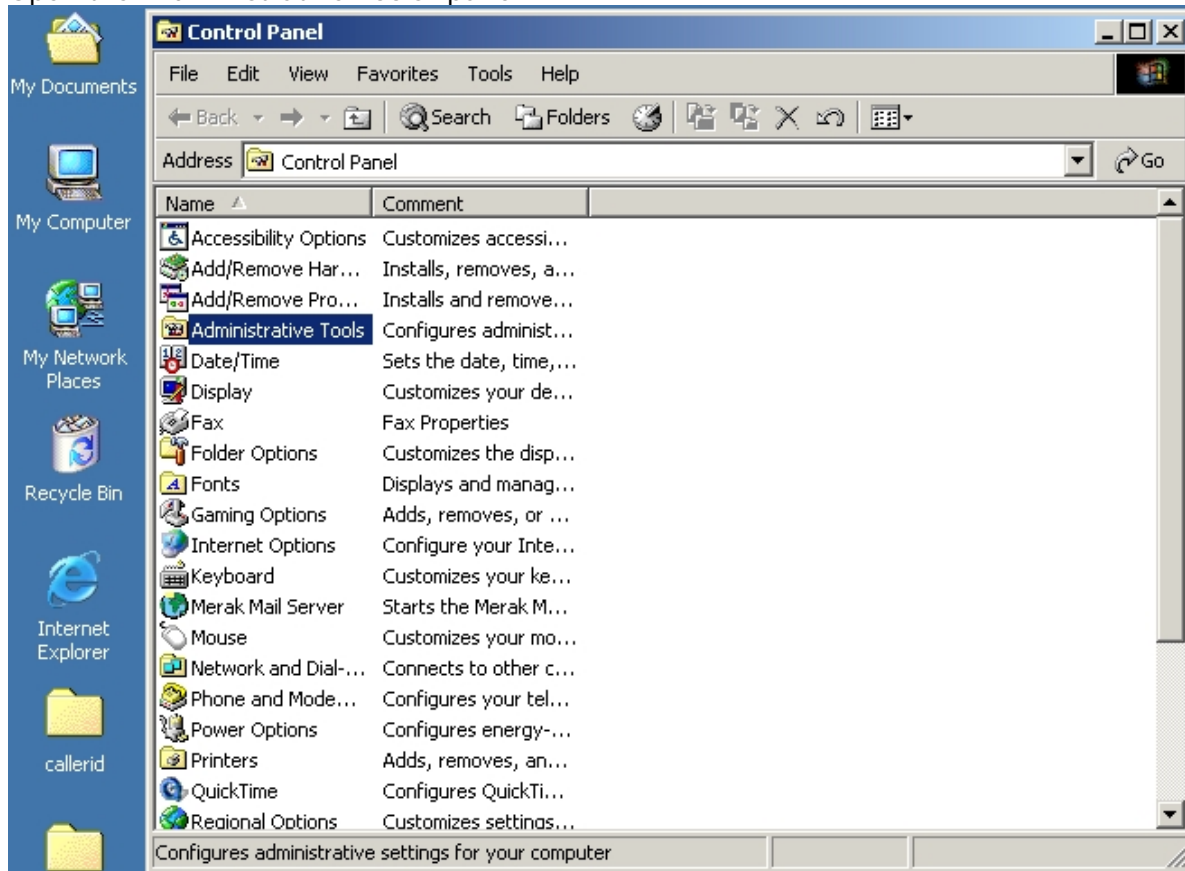
Invoke the InstallUtil.exe program, passing the path and filename of the WCLListener_D.exe file.



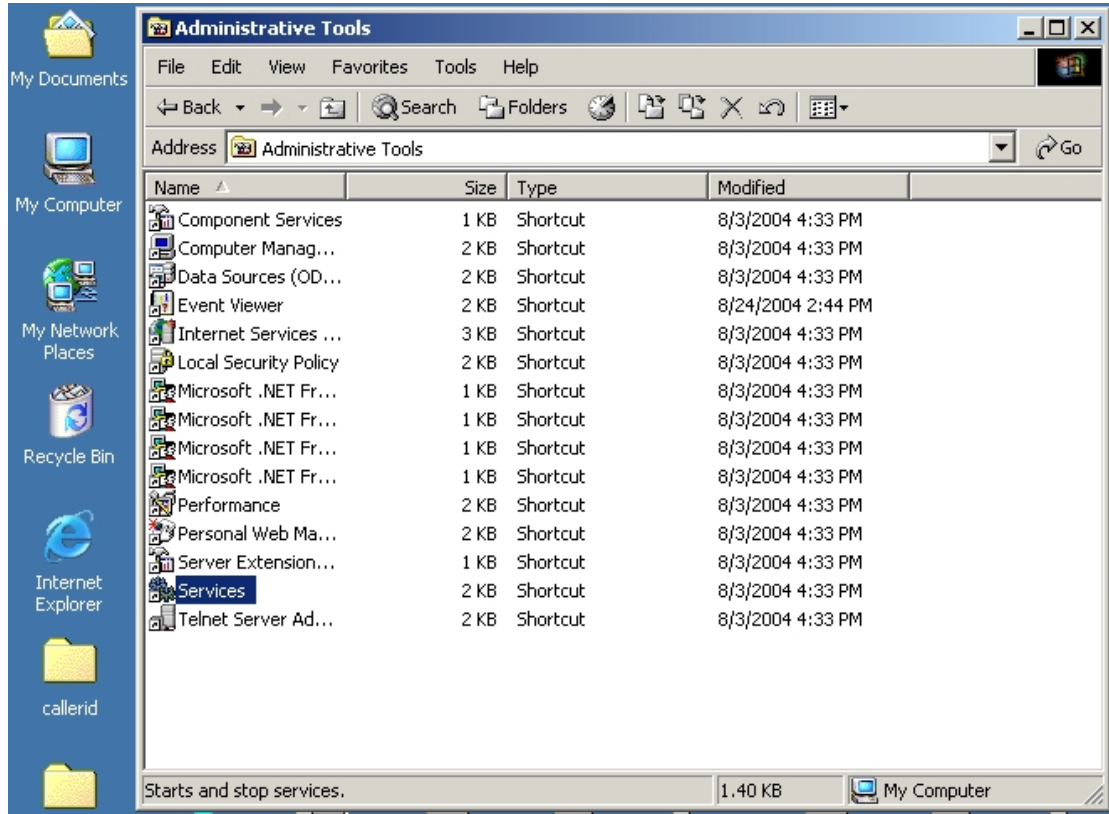
Next, do Start->Control Panel to open the control panel



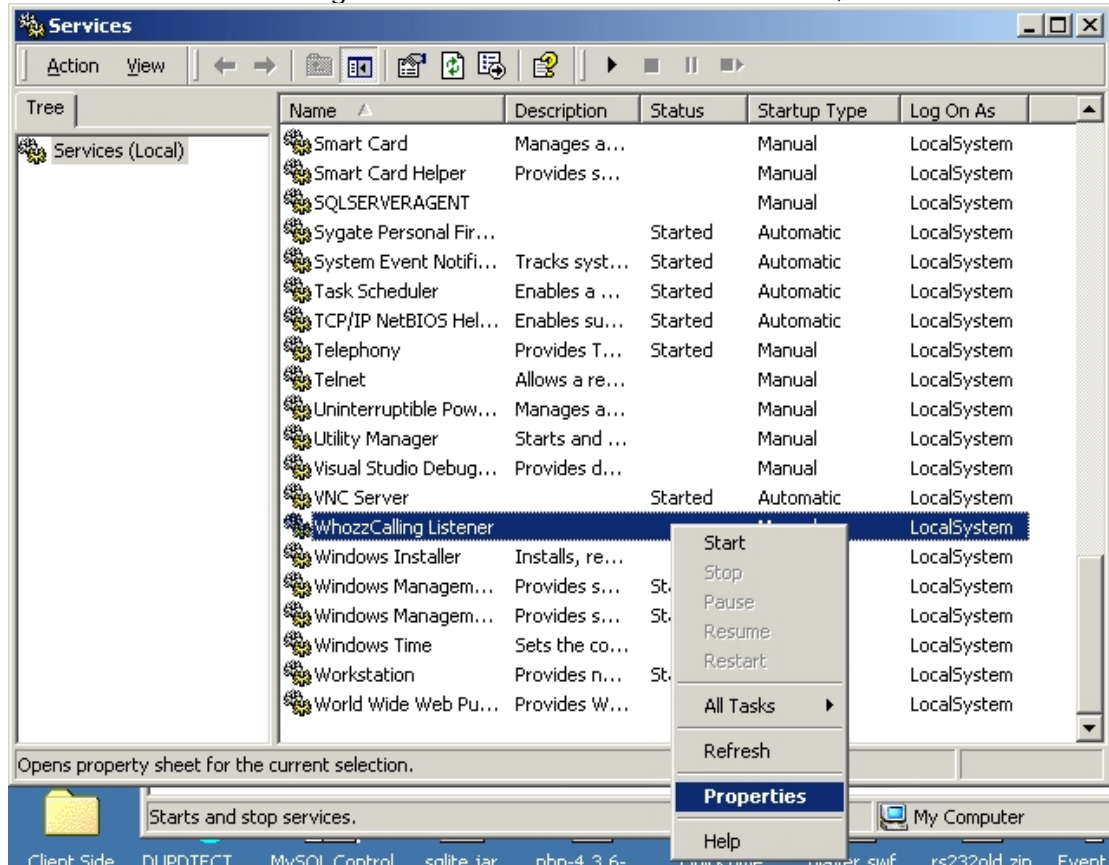
Open the "Administrative Tools" panel



Launch the "Services" Shortcut



Locate the "WhozzCalling Listener" Service in the services list, and RIGHT click it. Then, select "Properties"



In the properties panel, at the "Start Parameters" input field, enter the setting options for this service (see description of options below), and/or set the startup type (to start Automatically w/ windows).

The screenshot shows the 'WhozzCalling Listener Properties (Local Computer)' dialog box. The 'General' tab is active. The 'Service name' is 'WhozzCalling Listener'. The 'Display name' is 'WhozzCalling Listener'. The 'Description' field is empty. The 'Path to executable' is 'c:\documents and settings\administrator\my documents\visual studio projec'. The 'Startup type' is set to 'Manual'. The 'Service status' is 'Stopped'. There are buttons for 'Start', 'Stop', 'Pause', and 'Resume'. Below these, a message states: 'You can specify the start parameters that apply when you start the service from here.' The 'Start parameters' field contains '-k 192.168.1.255 -b 6697 -l C:\mylogfile.txt'. At the bottom are 'OK', 'Cancel', and 'Apply' buttons.

The initial settings for the WhozzCalling Listener Service are to connect to the serial port on COM1, and Broadcast call data to the entire network (255.255.255.255) on port 6699. The logfile location is the executable's directory, in a text file named "whozzcalling_listener.txt", and logging is disabled.

To change any of these settings, it is necessary to start the service with start parameters reflecting your specific installation needs. After being set once, the settings will be saved, and used upon further starts of the service.

Start parameters are:

-k *IP_ADDRESS*

Sets the network address to broadcast to. The default, 255.255.255.255, will broadcast to the entire network, but may slow the process down. In a network controlled by a router, the local subnet group may be more efficient (such as 192.168.1.255).

-b *PORT*

Sets the port on which to broadcast call data

-n

Disabled network broadcasting

-p *COM_PORT*

Sets the com port of the serial port which is connected to the WhozzCalling hardware unit. This setting is the NUMBER of the port ONLY (ex: 1 = COM1; 2 = COM2; 3 = COM3)

-l *LOGFILE*

Sets the name and path to the logfile (ex: C:\Logs\WhozzCalling\calldata.log)

-x

Disables text file logging